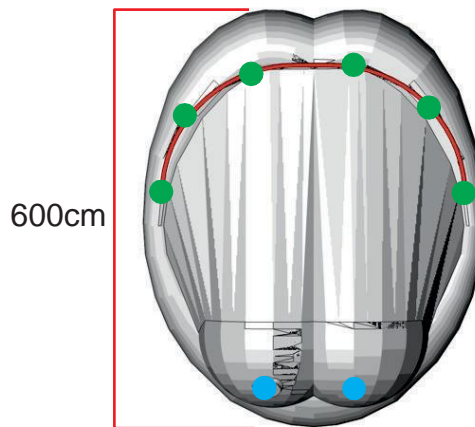
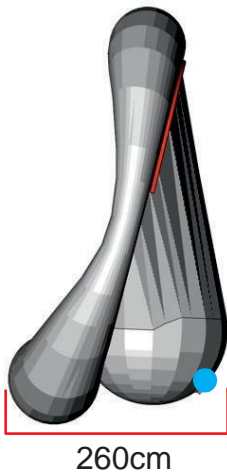
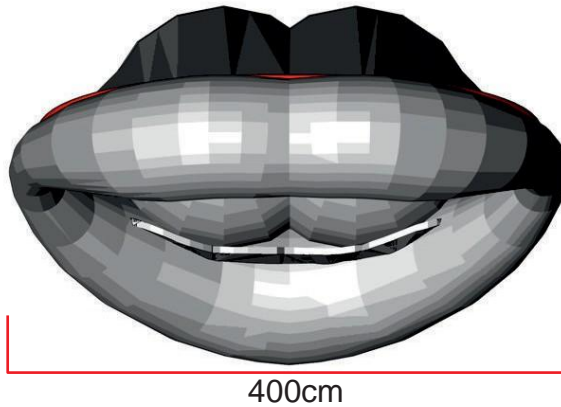
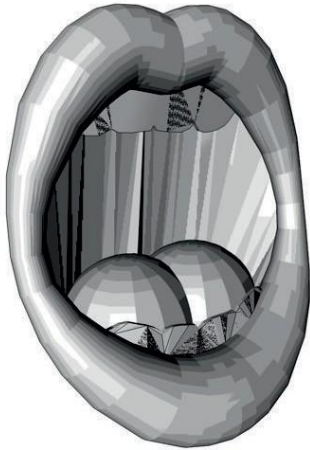




# Singing Mouth



● Attachment points      ● Blower position

Technical information	
Total transport weight	51 kg
Transport size inflatable	80 * 70 * 60 / 29 kg
Transport size blowers	2x 35 cm ø * 25 cm / 6 kg
Transport size pipe	2x 260 * 50 * 5 cm / 5 kg
Blowers	2x Airw 250 Velcro – 230V / 200W
Additional information	Semi circular aluminium pipe attached to the back of the inflatable, acting as main pick-up point, requires a 3m truss to be suspended

